



What a start to the year! I think that its fair to say that this term has been hard for everyone. Staff in school are working more hours than ever; with many of them still keeping their children at home and supporting their home education when they have finished their day jobs. Key Workers say they are working extra hours and parents at home are having to fit their work around their children. It's tough for everyone. Just yesterday Mrs Smith and I were chatting about how tired we are, this tiredness isn't just from our workload that has increased exponentially or from the increased anxiety of being exposed to large numbers of children but from a tiredness of Covid and the challenges it brings to our everyday life.

I am hoping that each and every one of you manages some downtime over the half term break, a chance to breath, enjoy family time (without negotiating school work). We all need to be kind to ourselves, to enjoy all that we have and to value the work of others albeit in different situations to our own.

We await with anticipation, the announcement from Boris Johnson on the 22nd February and hope that schools will reopen from 8th March. Depending on the announcement and expectations placed on school we will be planning our return and communicating with you at the earliest convenience. Unfortunately, schools do not get information in advance of the general public when it comes to school arrangements so please be patient after the announcement as we will have to work with DGAT, the LA and the Government to prepare school for opening.

Our INSET day on the 22nd February (which means that the school will be closed to everyone and there will be no home education) is focusing on well-being across our trust; this will stand us in good stead to return on Tuesday 23rd ready to effectively support your children.

#### **HALF TERM CHALLENGES!**

We appreciate that many of our parents will be working over half term and therefore wanted to give the children a few mini-challenges to fill some of their days, giving true purpose to the work. We hope that you all enjoy building dens and using them creatively and would also like help decorating our tree with hearts. This is explained later in the newsletter.

On behalf of the school staff we hope that you all have a lovely half term.



**Lisa Harford—Headteacher**

## Half Term Challenges—things to do!

Here are some challenges—they are not compulsory and have been offered for fun!

**DEN BUILDING CHALLENGE!** Build a den and enjoy spending time in it. Take a photograph and post it on our fb page!



**FEBRUARY HEARTS CHALLENGE - PASSWORD:** Togeth3R

*Hearts of Love*  
for February

Last Spring, as the pandemic began, rainbows sprang up everywhere. They were a vibrant expression of hope and said 'thank you' to keyworkers throughout our communities.

Following that theme we are offering some simple resources which you might like to share with your families and invite them to use to express their continuing love, support and hope.

Ideas for this have been drawn from the February edition of Growing Together, 'Who Loved First'.

[www.gloucester.anglican.org/growing-together](http://www.gloucester.anglican.org/growing-together)  
Password

## CAN YOU DECORATE OUR SCHOOL TREE WITH HEARTS?

Use your imagination—use the templates attached to the newsletter or create your own! They can be made from anything, paper, card, recycled materials, knitted, made from wood, tin foil, ribbon etc.

If you need it laminated before being placed on the tree just pop it through the school letterbox and we will laminate and hang it up for you!



## **PARENT EVENINGS:**

Thank you to those of you that attended parents' evening via Schoolcloud—we hope that you found them useful? We appreciate that 5 minutes isn't very long but given how busy teachers currently are we felt it was better to touch base. Please remember, if you had more to ask, this parents' evening can be followed up, if requested, by a call from the year group (this would be one of the staff available that knows your child). A few parents were unable to connect with school for their chosen time (we are not sure why) please let us know if this is the case and we will make sure you are spoken to.

## **No Child Left Behind**

**We are pleased to be part of the No Child Left Behind project across Cheltenham.**

No Child Left Behind is a project in Cheltenham, UK that aims to help all young people to thrive.

In 2018, Cheltenham partners commissioned a needs assessment that highlighted that there were around 4400 children and young people in our town living in poverty. It also showed that, when compared to their more affluent peers, they faced significant challenges such as poorer educational attainment, higher rates of school exclusion, poorer mental and physical health, were more likely to be under social care and were more likely to be victims of crime.

**No Child Left Behind are currently seeking laptops to deploy to disadvantaged pupils across Cheltenham.**

## **SCHOOL COMMUNITY FRIDGE**

We are looking for a working fridge that we can plug in outside of the school entrance. This can then be used to donate or collect food from.

If you have a fridge—  
the bigger the better

in good working order please get in touch!

<https://www.hubbub.org.uk/the-community-fridge>



## **From the office**

Please feel free to email the school admin@st-james-pri.gloucs.sch.uk with any of your needs or questions. We are here to help!

## **Eco Area**

Keep your recycling coming— please make sure it is clean and fits in the box!



## UNIVERSAL UNIFORM UPDATE

Our school uniform is now available to buy at Universal Uniform. You can collect from them directly to save on postage and the jumpers are cheaper than our previous supplier. Our new PE uniform is also available to buy from now. From September 2021 we would like all children to have our blue school sports t-shirt.



St James' C of E Embroidered Sweatshirt

Prices from: **£12.00**

[View More](#)



St James' C of E Primary School Embroidered Cardigan

Prices from: **£12.50**

[View More](#)



Quality White School Polo Shirt  
48in Chest

Prices from: **£4.99**

[View More](#)



St James' 3 Button Sport Polo

Prices from: **£15.50**

[View More](#)

# Staff Well-being at St. James'

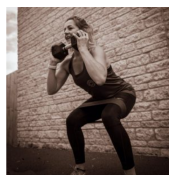


It's time to prioritise yourself.

Be fitter. Be stronger. Be happier.

Hello and Welcome!

I am Kirsty and I am so glad you are here. I'm a Personal Trainer/ Nutrition Advisor with a passion to support and guide people like you in navigating their way to find that healthy balance with their physical, nutritional and emotional wellbeing. Make sure you read our testimonials - but first things first...



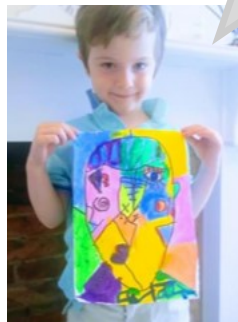
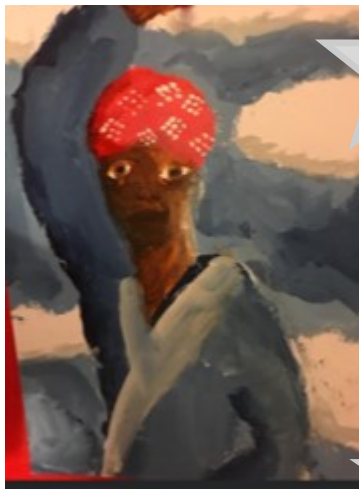
Thank you to our wonderful parents (Kirsty and Danella) who have supported our Cheltenham Primary School 6 weeks of well-being. Staff across our schools are able to access sessions from them, Studio 10, mindfulness from Ian Bussell and mindful drawing.

You can find out about Chi-ChiFit at

<https://chichi-fit.co.uk/>

Infinite Balance at <https://infinitebalance.co.uk/>

# Art Week & Well-being Weeks at St. James'



What a lot of amazing art and cakes!





## SCHOOL TERMS AND HOLIDAYS 2021/2022



SEPTEMBER					OCTOBER					NOVEMBER							
Mon		6	13	20	27	Mon	4	11	18	25	Mon	1	8	15	22	29	
Tues		7	14	21	28	Tues	5	12	19	26	Tues	2	9	16	23	30	
Wed	1	8	15	22	29	Wed	6	13	20	27	Wed	3	10	17	24		
Thur	2	9	16	23	30	Thur	7	14	21	28	Thur	4	11	18	25		
Fri	3	10	17	24	Fri	1	8	15	22	29	Fri	5	12	19	26		
Sat		4	11	18	25	Sat	2	9	16	23	30	Sat	6	13	20	27	
Sun		5	12	19	26	Sun	3	10	17	24	31	Sun	7	14	21	28	
DECEMBER					JANUARY					FEBRUARY							
Mon	6	13	20	27	Mon	3	10	17	24	31	Mon	7	14	21	28		
Tues	7	14	21	28	Tues	4	11	18	25	Tues	1	8	15	22			
Wed	1	8	15	22	29	Wed	5	12	19	26	Wed	2	9	16	23		
Thur	2	9	16	23	30	Thur	6	13	20	27	Thur	3	10	17	24		
Fri	3	10	17	24	31	Fri	7	14	21	28	Fri	4	11	18	25		
Sat		4	11	18	25	Sat	1	8	15	22	29	Sat	5	12	19	26	
Sun		5	12	19	26	Sun	2	9	16	23	30	Sun	6	13	20	27	
MARCH					APRIL					MAY							
Mon		7	14	21	28	Mon	4	11	18	25	Mon	2	9	16	23	30	
Tues	1	8	15	22	29	Tues	5	12	19	26	Tues	3	10	17	24	31	
Wed	2	9	16	23	30	Wed	6	13	20	27	Wed	4	11	18	25		
Thur	3	10	17	24	31	Thur	7	14	21	28	Thur	5	12	19	26		
Fri	4	11	18	25	Fri	1	8	15	22	29	Fri	6	13	20	27		
Sat		5	12	19	26	Sat	2	9	16	23	30	Sat		7	14	21	28
Sun		6	13	20	27	Sun	3	10	17	24	Sun	1	8	15	22	29	
JUNE					JULY					AUGUST							
Mon		6	13	20	27	Mon	4	11	18	25	Mon	1	8	15	22	29	
Tues		7	14	21	28	Tues	5	12	19	26	Tues	2	9	16	23	30	
Wed	1	8	15	22	29	Wed	6	13	20	27	Wed	3	10	17	24	31	
Thur	2	9	16	23	30	Thur	7	14	21	28	Thur	4	11	18	25		
Fri	3	10	17	24	Fri	1	8	15	22	29	Fri	5	12	19	26		
Sat		4	11	18	25	Sat	2	9	16	23	30	Sat		6	13	20	27
Sun		5	12	19	26	Sun	3	10	17	24	31	Sun		7	14	21	28

Term Time		Holidays	
Bank Holiday		Inset Day	

Term 1: Thurs 2 <sup>nd</sup> Sept – Fri 22 <sup>nd</sup> Oct 2021	37 days
Term 2: Mon 01 <sup>st</sup> Nov – Fri 17 <sup>th</sup> Dec 2021	35 days
Term 3: Tue 4 <sup>th</sup> Jan – Fri 18 <sup>th</sup> Feb 2022	34 days
Term 4: Mon 28 <sup>th</sup> Feb – Fri 8 <sup>th</sup> April 2022	30 days
Term 5: Mon 25 <sup>th</sup> April – Fri 27 <sup>th</sup> May 2022	24 days
Term 6: Mon 6 <sup>th</sup> June – Fri 22 <sup>nd</sup> July 2022	35 days
<b>Total</b>	<b>195 Days*</b>

Christmas Bank Holidays	27 <sup>th</sup> December 2021 28 <sup>th</sup> December 2021
New Year Bank Holiday	03 <sup>rd</sup> January 2022
Good Friday	15 <sup>th</sup> April 2022
Easter Monday	18 <sup>th</sup> April 2022
Early May Bank Holiday	02 <sup>nd</sup> May 2022
Spring Bank Holiday	02 <sup>nd</sup> June 2022
The Queen's Platinum Jubilee	03 <sup>rd</sup> June 2022
Summer Bank Holiday	29 <sup>th</sup> August 2022

\*195 days are defined as "School days". In the school year 2021/22 pupils must attend for 190 days. Schools may decide individually or collectively which 5 days in the year are INSET or non-contact days (days pupils do not need to attend). Please Note: Schools considering alternative dates or considering changes to their school opening times may wish to contact our Transport Team to discuss transport implications and contact local childcare providers to discuss what impact this could have.